

How to Install Call (.cab) file ?

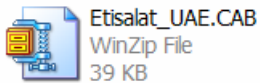
What Is a Cabinet File?

A cabinet (.cab) file is a library of compressed files stored as a single file. Cabinet files are used to organize installation files that are copied to the user's system. A large compressed file can be spread over several .cab files.

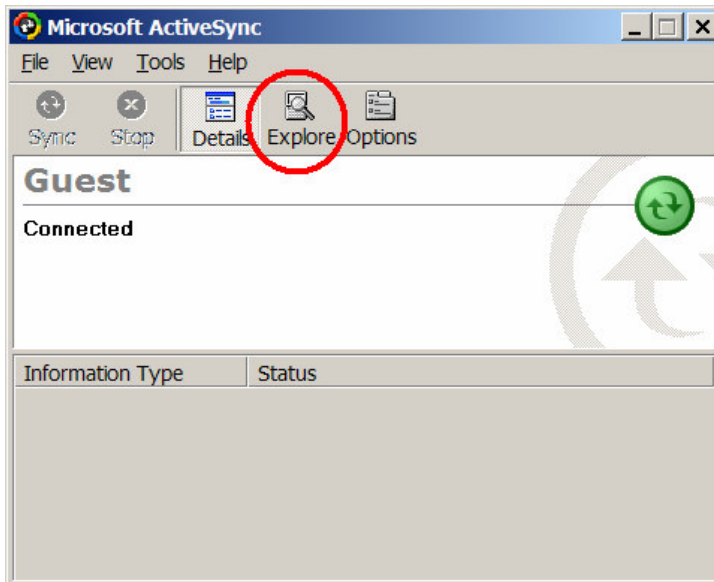
Installation Process :

- The cab file icon look exactly the same as the files in zip format (as below) but it has different installation procedures .

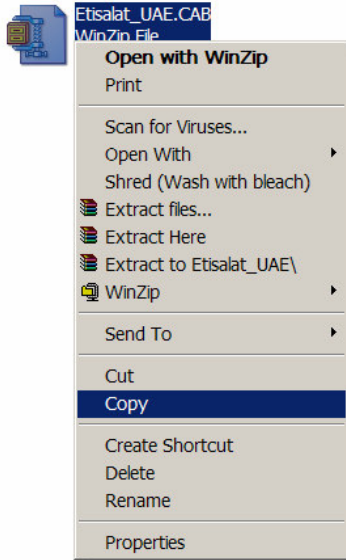
in the example below we will install the Etisalat Services Settings file which is in cab format



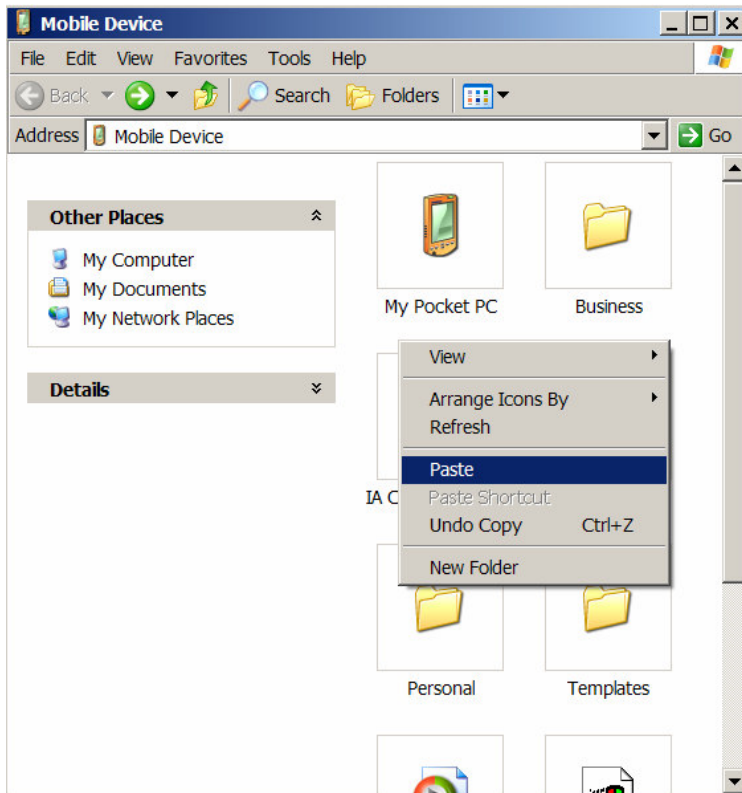
- Save the (.cab) file anywhere in your Desktop PC (e.g. Desktop)
- Make Sure the Microsoft ActiveSync 3.7.1 Software are installed into your Desktop PC
- Connect your i-mate Device to the Desktop PC via (Cradle , Serial , IrDA or Bluetooth)
- Once the Device is Connected Click Explore



- A " Mobile Device " pop-up box will appear which is the i-mate™ Device Memory
- Copy the file from it's location by right-clicking then Select "Copy"



- In the Mobile Device pop-up box right Click on any blank area then select "Paste"



- Now in your i-mate™ Pocket PC Device go to Start > Programs > File Explorer



- In the file Explorer Program Browse the location where you've chosen to save the .cab file



- Simply Click on the file with your Stylus and the installation will start automatically .

Installing CDL - Eti 04:58

My Device Name

Installing CDL - Etisalat Customi...

Writing information for "Remove Programs"...

Cancel

Edit Open